

MATS USER GUIDE

INTRODUCTION

This document shows how to use the tourism platform from a tourist or interested user point of view, which gives them the possibility to obtain up-to-date information about the places they will visit in the city of Valencia and to plan a specific day.

From a tourist point of view, it would be of great help to have all the updated information about the different places of interest in the city such as a not so expensive restaurant, a restaurant that serves a particular type of food, giving them the opportunity to make reservations in those restaurants; or if they want to know if there is any art showrooms open or simply know to which movie theater they can go and receive information about which movies are playing, where and when. Because of all of these aspects, the advantages of having a resource for users that allows them to search and plan different activities of interest for tourists during a given day are noticeable.

MATS (MultiAgent Tourism System)

This Agent provides the interface for the tourist or interested user. Through the interface the user can access the services offered by the application just by executing this agent in his/her mobile device (PDA/Smartphone or cell phone supporting java). In this brief manual we will try to describe in detail the correct way to execute the Agent in order to give it the right use and from there, obtain the expected results when using the different services that have been implemented far.

When MATS is executed in a mobile device, a welcome window opens showing a series of graphic icons on the right side allowing the user to select the place of interest they are willing to find information for. These places can be restaurants, movie theaters, museums, theaters and other places of general interest like monuments, churches, beaches, parks, etc. Besides, it has a button, which allows the user to plan a specific day with different activities according to the users preferences. These buttons and their respective icons were chosen in order to make it easier for the users (tourists) to utilize this interface agent.

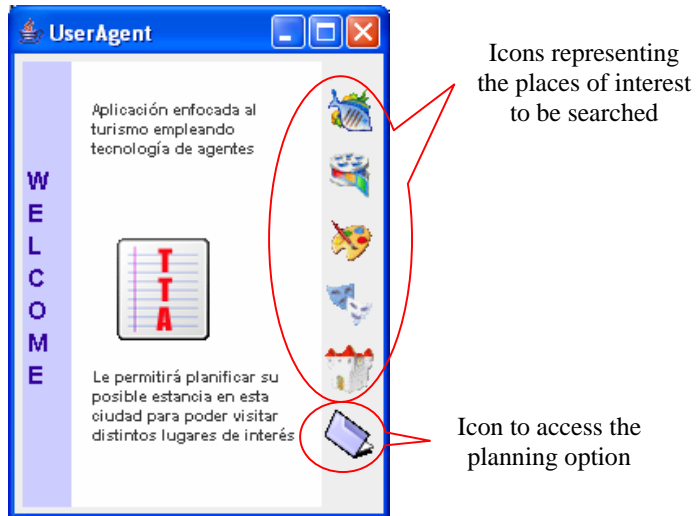


Figure 1. Application welcome window

Restaurant Search

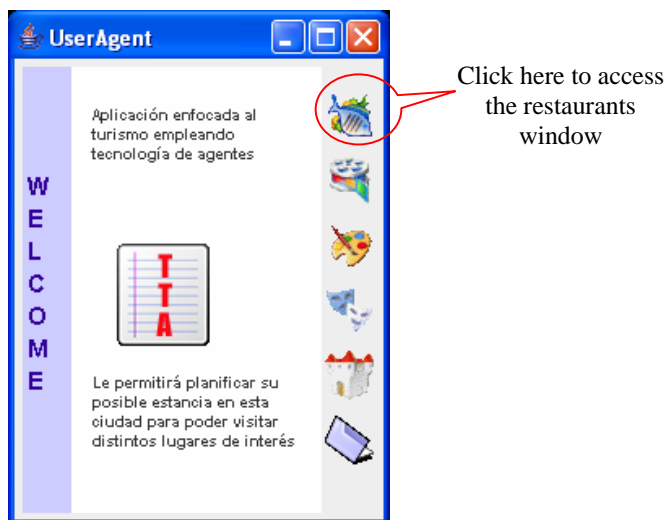


Figure 2. Access to restaurant search window

When the restaurant icon is selected, the user is redirected to a new window where he will find two icons, one to do the search and following reservations to the desired restaurant, and one to access a window that keeps a record of past reservations and where the user can cancel any undesired reservations.



Figure 3. Restaurant search window

The search process can be filtered in order to make it more suitable to the user needs following certain parameters such as zone, price, and type of food. This generates a list with the restaurants that fall into the parameters and the user will only need to choose one of his/her preference and continue to make reservations if desired. If the user doesn't have any preference, these fields will be left in the value established, as default and the result will be a list of all the active restaurants.

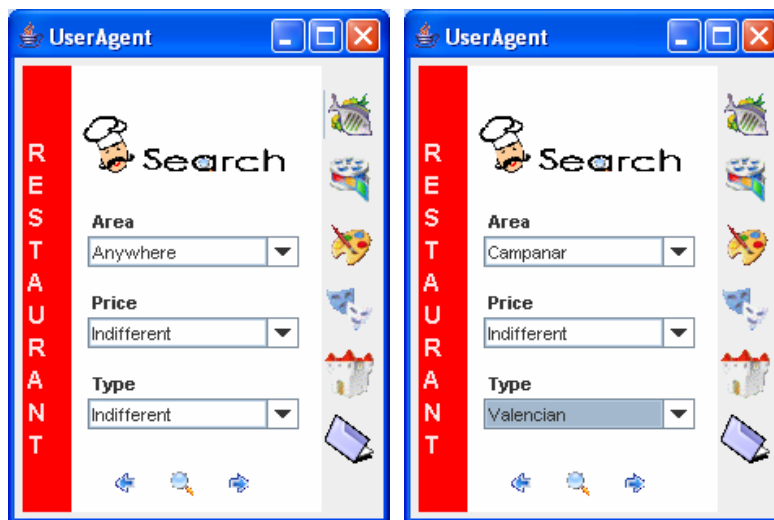


Figure 4. Window to select some parameters that will filter the restaurant search

To execute a search taking into account specific aspects about the kind of restaurant needed, the user is offered a window with advanced options, which can be access by clicking the icon shown in the graphic below. These options allow the user to choose from different parameters the characteristics that best fit the restaurant he/she wants to find.

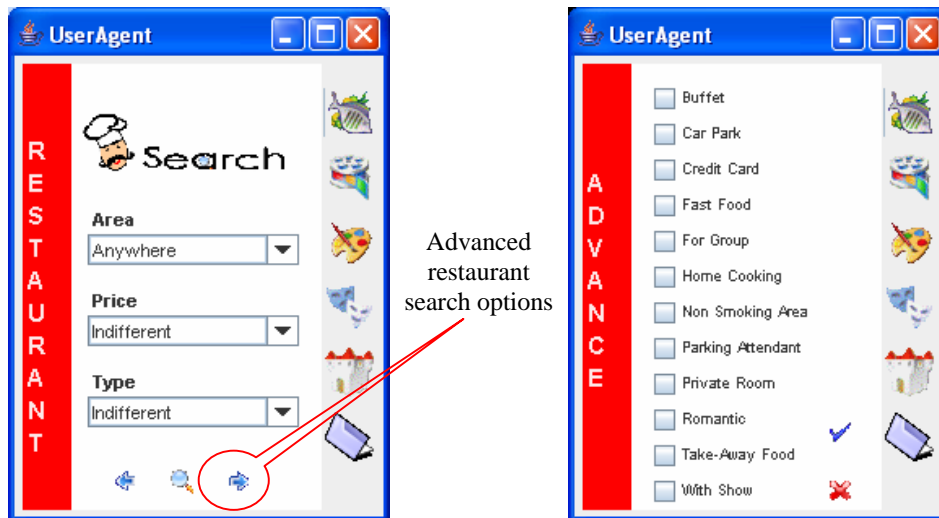


Figure 5. Window with advanced options to make a more specific restaurant search

The window that is generated from the search looks like the images below and has a list with the restaurants that fall into the parameters selected by the user when the search was made.

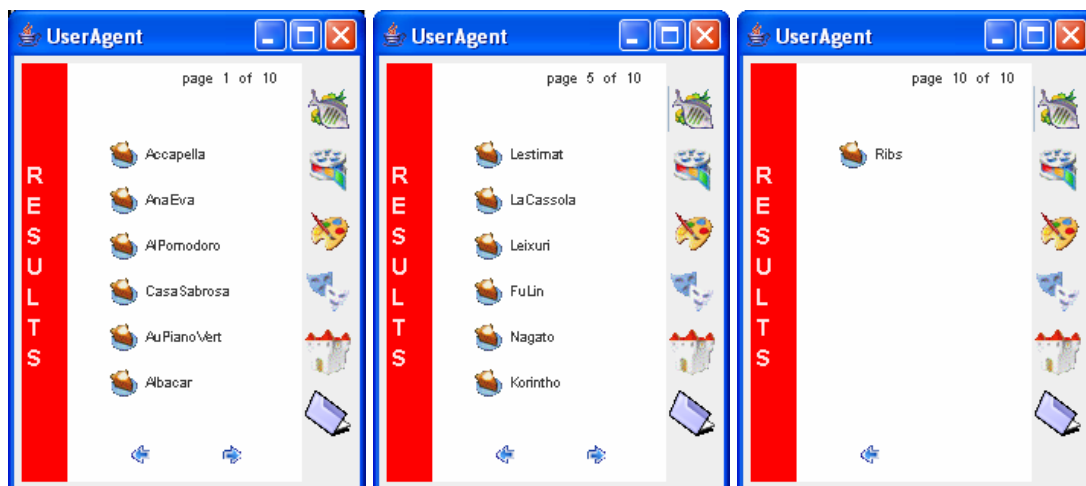


Figure 6. Window containing the restaurant search output

By clicking on the name of each restaurant, the user can access detailed information such as complete address, phone number, type of food served and average price. This information is given in order to help the user to identify the restaurant that best fits his/her needs and then, continue place a reservation.

The user can start the reservation process for the selected restaurant from this window, by clicking on the Notepad icon that is located next to the Back arrow. In this process the user can choose the number of people, date and time for the reservation.

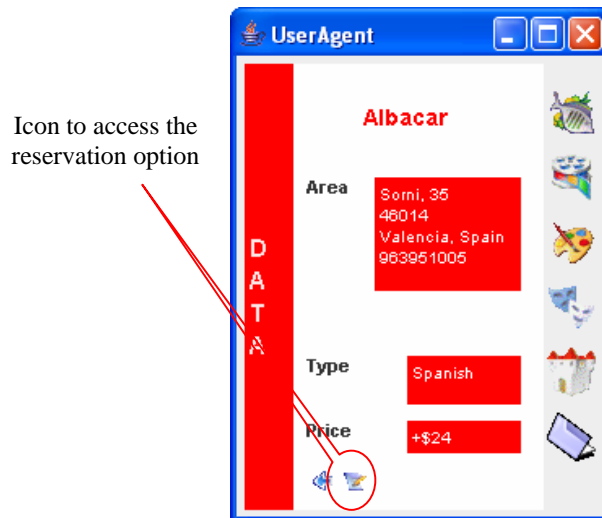


Figure 7. Detailed information of a restaurant

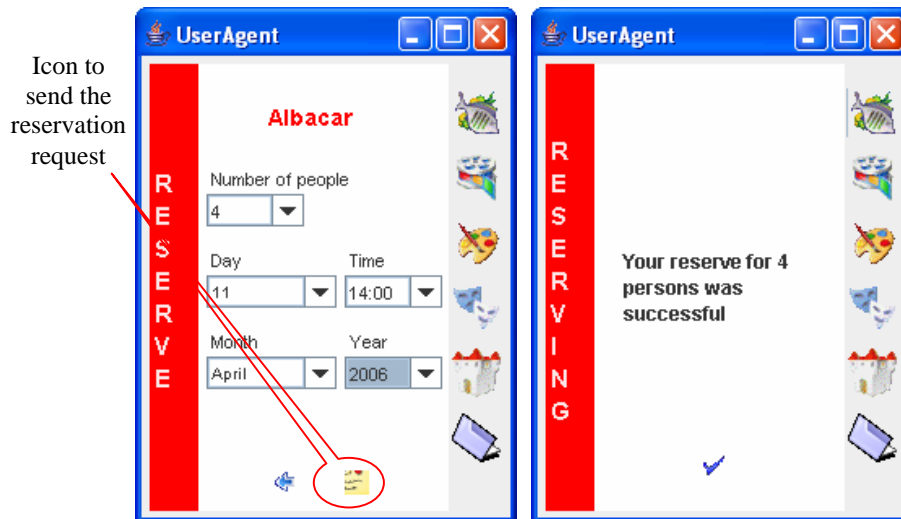


Figure 8. Reserving process window and reserve process successful

If the restaurant has no availability for the time selected by the user, the system can recommend an alternative time in which the restaurant is available and the user can decide if he/she wants to proceed with the reservation process.

When the user wants to see the reservations that have been placed, he/she can click on an icon that allows him/her to see the reservation history.

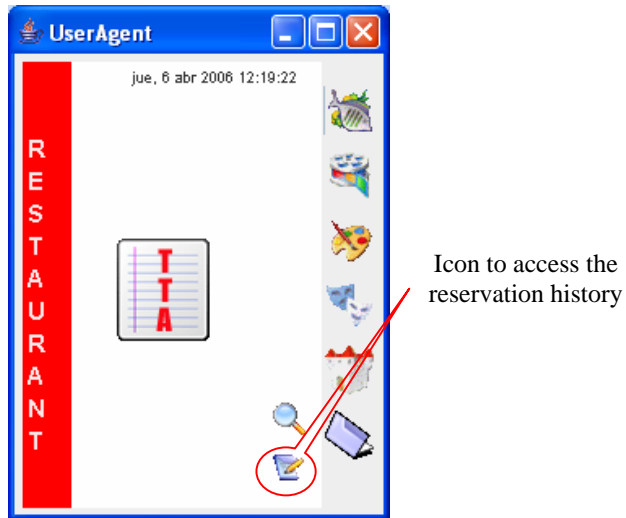


Figure 9. Access to the reservation history window

When the history is accessed a list is shown with the date in which the reservations were placed.

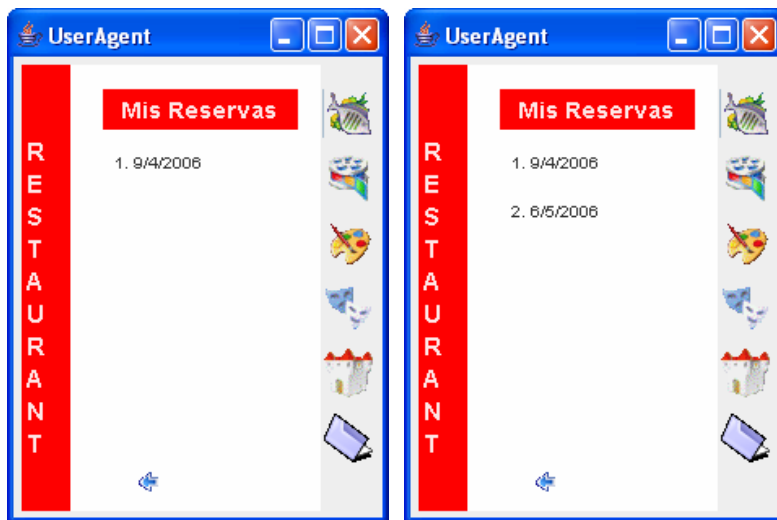


Figure 10. Window containing the reserve list history

Movie Theater Search

When the user selects the movie theater icon, a new window appears offering the options to Search Movie Theaters.



Click here to access the movie theaters window

Figure 11. Access to movie theaters search window



Movie Theater search option

Figure 12. Movie Theater search window

This search can be narrowed by two parameters according to the user's interests: area and movie category. Same as in the restaurant search, the results are given in a window that shows all the movie theaters that fall into the criteria established by the user.

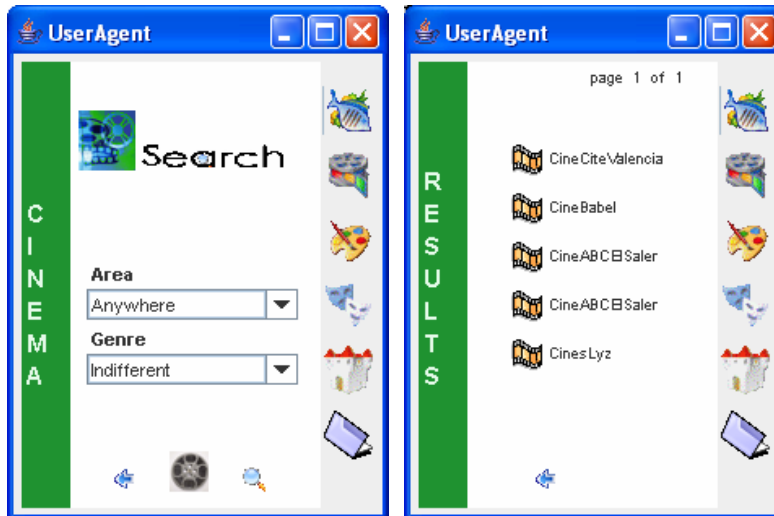


Figure 13. Window to filter the movie theater search and search output window

In order to view specific information about each Movie Theater, the user simply needs to click on the names of the Movie Theaters, when clicked the user can see the location and a list of all the movies that are being played in the different Theaters Showrooms.



Figure 14. Detailed information of a movie theater

Museum Search

When the user selects the Museum icon, a new window appears offering the options to Search Museums.



Figure 15. Access to museum search window



Figure 16. Museum search window

This search can be narrowed by two parameters according to the user's interests: area and type of museum the user wishes to visit.

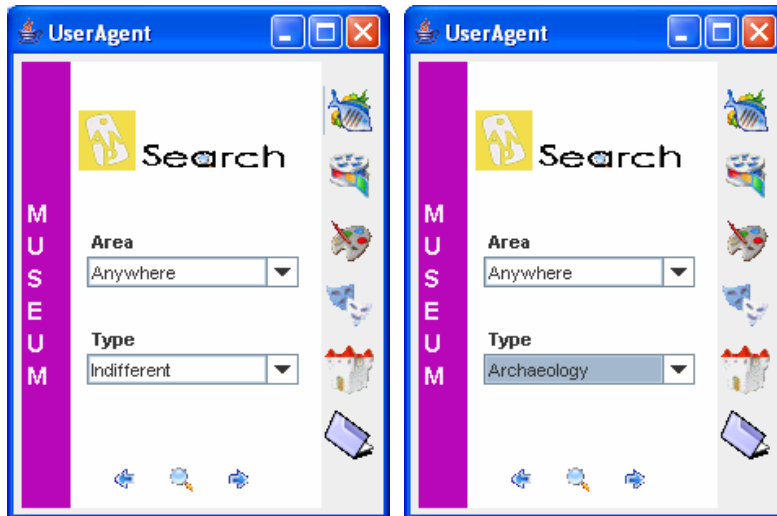


Figure 17. Window to filter the museum search

Same as in the restaurant search, the results are given in a window that shows all the museums that fall into the criteria established by the user.



Figure 18. Window containing the museum search output

In order to view specific information about each Museum, the user simply needs to click on the names of the Museums, when clicked the user can see the location, the type of museum, expositions being held at the museum and the price in case the admittance is not free.



Figure 19. Detailed information about the museum

Theater Search

When the user selects the Theater icon, a new window appears offering the options to Search Theaters.



Click here to access the Theaters window

Figure 20. Access to theater search window

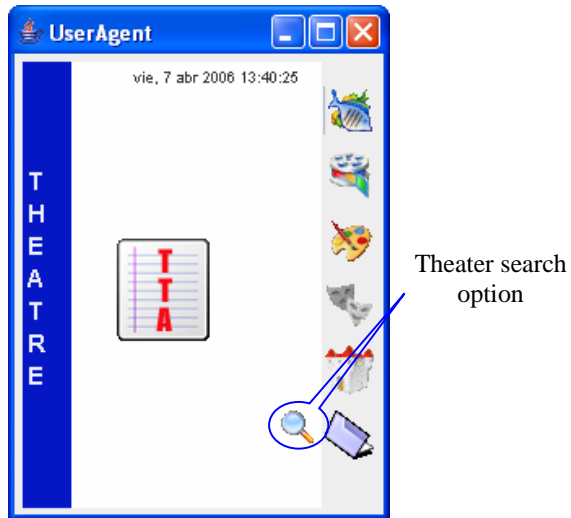


Figure 21. Theater search window

This search can be narrowed by two parameters according to the user's interests: area and type of theater the user wishes to visit.



Figure 22. Window to filter the theater search

Same as in the restaurant search, the results are given in a window that shows all the theaters that fall into the criteria established by the user.



Figure 23. Window containing the theater search output

In order to view specific information about each Theater, the user simply needs to click on the names of the Theaters, when clicked the user can see the location, the type of theater and information about the Play (Director, Writer, Genre and the Actors who are part of the Play)



Figure 24. Detailed information about the theater

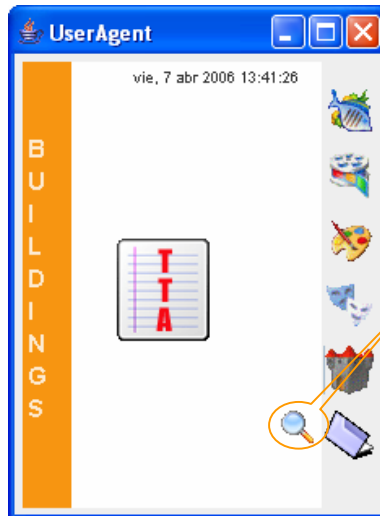


Figure 25. Detailed information about the play

Historic and Tourist Places of Interest Search



Figure 26. Access to the places of interest search window



Click here to
access the Historic
and Tourist Places
window

Figure 27. Historic and tourist places search window

Within this search we have consider gathering information about Bridges, Beaches, Monuments, Churches, Hospitals, Parks, etc. This search can be narrowed by two parameters according to the user's interests: area and type of place the user wishes to visit.



Figure 28. Window to filter the historic and tourist place search

Same as in the restaurant search, the results are given in a window that shows all the places that fall into the criteria established by the user.

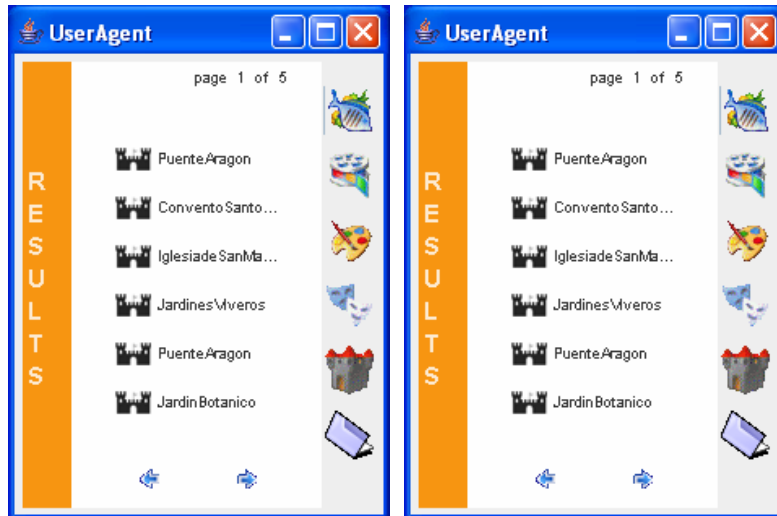


Figure 29. Window containing the historic and tourist places search output

In order to view specific information about each Place, the user simply needs to click on the names in the list to see information about the location, the type of place it is (park, hospital, monument, beach, etc.)

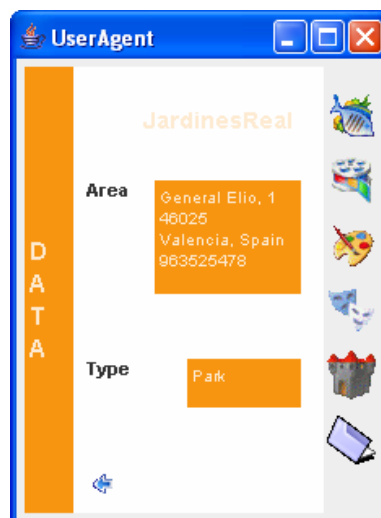


Figure 30. Detailed information about the place of interest

Planning Option

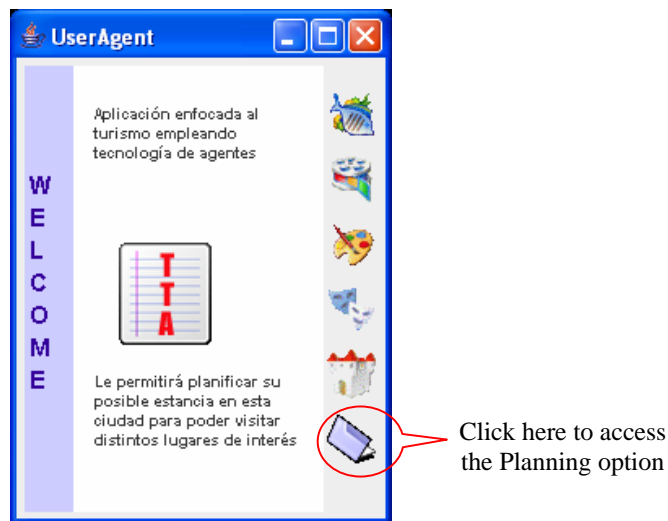


Figure 31. Access to planning option window

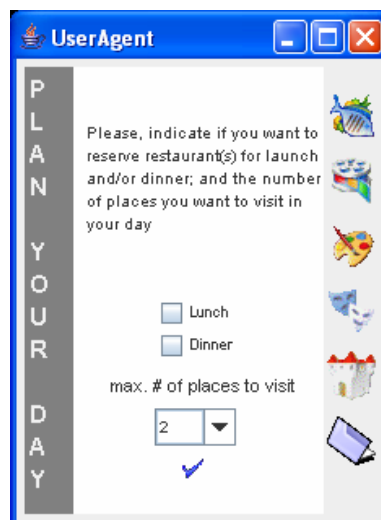


Figure 32. Planning option window

By accessing this option, the user makes use of one of the most important functionalities of the system, which is the possibility to plan a specific day with a series of activities where the reservation of a restaurant(s) for lunch, dinner or both can be included. The planning tool tries to arrange the activities in such a way that time can be managed efficiently throughout the day. The user has the possibility of choosing the places he/she wants to visit (5 maximum), besides the restaurant reservations.

The resulting plan shows a list with all the places the user is planning on visiting and the schedule the user will follow. The user can access information about every element shown in the list by clicking on them, which gives the user the possibility to accept, decline or change the options. If changes are made, the plan would need to be revised, this option is being implemented in the platform.

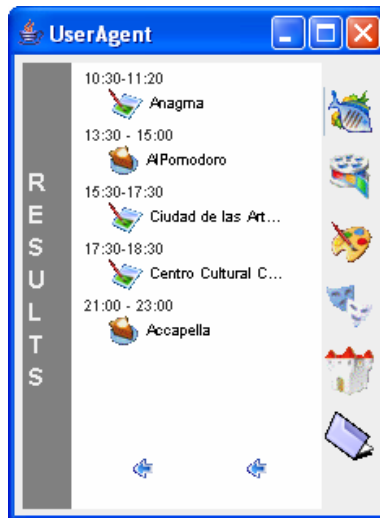


Figure 33. Window containing the resulting plan